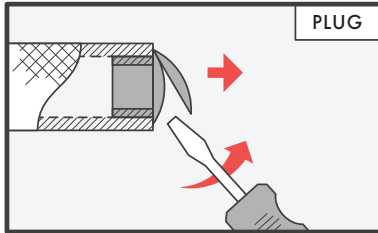
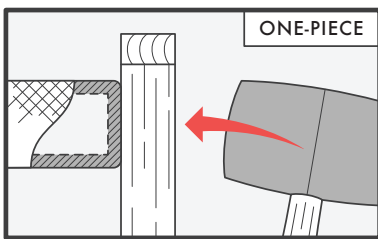


PUBNUB MOUNTING INSTRUCTIONS



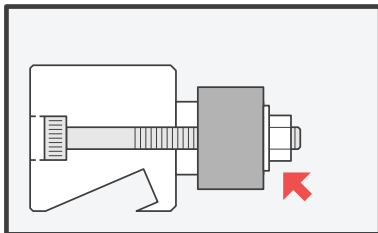
STEP 01

Some handlebars have plugs and others have a one-piece grip. If you have a plug simply remove the plug by prying it out.



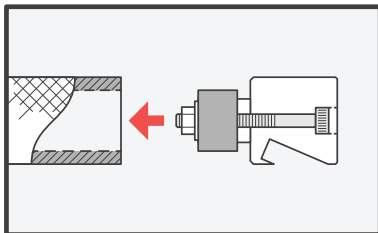
STEP 02

Take a rubber mallet or regular mallet and a 2x4 and strike the end of your handlebar. This will result in a hole in the end of your grip. Discard cut piece of grip.



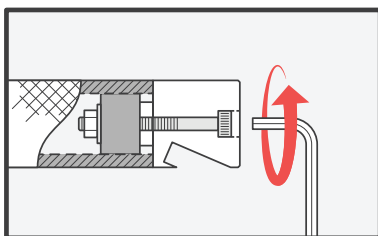
STEP 03

Finger tighten flange nut. Optional - Lube rubber with liquid dish soap if tight fit.



STEP 04

Insert rubber end inside handlebar. Rotate PubNub to desired position.



STEP 05

Use 5mm hex wrench and turn clockwise to secure PubNub in the handlebar and enjoy!